





**VANTRUNK**

# SECTION 05: FIXINGS

Cable Management installations require a range of ancillary fixings. Vantrunk stock the full range of fixings required to ensure installers have a reliable 'single source' to meet their site requirements.





### Cup Square Bolts

Thread Size	Length (mm)	Part No. 	Part No. 
M10	16	318AR31-GA	318AR81-SS
	20	318AR32-GA	318AR82-SS
	25	318AR33-GA	318AR83-SS





### Cone Point Hex Head Set Screw

Thread Size	Length (mm)	Part No. 	Part No. 
M10	40	M10x40-CP-ZD	M10x40-CP-SS-A4
M12	40	M12x40-CP-ZD	M12x40-CP-SS-A4



### Hex Head Set Screw

Thread Size	Length (mm)	Part No. 	Part No. 
M6	20	M6x20-HS-GA	M6x20-HS-SS-A4
	25	M6x25-HS-GA	M6x25-HS-SS-A4
	30	M6x30-HS-GA	M6x30-HS-SS-A4
	35	M6x35-HS-GA	M6x35-HS-SS-A4
	40	M6x40-HS-GA	M6x40-HS-SS-A4
M8	20	M8x20-HS-GA	M8x20-HS-SS-A4
	25	M8x25-HS-GA	M8x25-HS-SS-A4
	30	M8x30-HS-GA	M8x30-HS-SS-A4
	35	M8x35-HS-GA	M8x35-HS-SS-A4
	40	M8x40-HS-GA	M8x40-HS-SS-A4
M10	20	M10x20-HS-GA	M10x20-HS-SS-A4
	25	M10x25-HS-GA	M10x25-HS-SS-A4
	30	M10x30-HS-GA	M10x30-HS-SS-A4
	35	M10x35-HS-GA	M10x35-HS-SS-A4
	40	M10x40-HS-GA	M10x40-HS-SS-A4
	50	M10x50-HS-GA	M10x50-HS-SS-A4
	60	M10x60-HS-GA	M10x60-HS-SS-A4
M12	25	M12x25-HS-GA	M12x25-HS-SS-A4
	30	M12x30-HS-GA	M12x30-HS-SS-A4
	35	M12x35-HS-GA	M12x35-HS-SS-A4
	40	M12x40-HS-GA	M12x40-HS-SS-A4
	50	M12x50-HS-GA	M12x50-HS-SS-A4
60	M12x60-HS-GA	M12x60-HS-SS-A4	
75	M12x75-HS-GA	M12x75-HS-SS-A4	



### Pan Head Screw

Thread Size	Length (mm)	Part No.	SS
M6	12	M6x12-PHS-SS-A4	
	16	M6x16-PHS-SS-A4	
	20	M6x20-PHS-SS-A4	
	25	M6x25-PHS-SS-A4	
	30	M6x30-PHS-SS-A4	
	35	M6x35-PHS-SS-A4	
	40	M6x40-PHS-SS-A4	



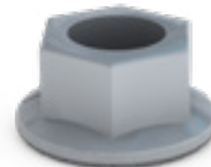
### Mushroom Head Bolt & Square Nut

Thread Size	Length (mm)	Part No.	GA
M6	12	M6X12-BN-GA	
	16	M6X16-BN-GA	
	20	M6X20-BN-GA	
	25	M6X25-BN-GA	
	30	M6X30-BN-GA	



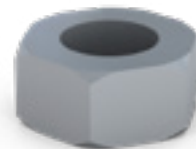
### Serrated Flange Nut

Size	Part No.	GA	Part No.	SS
M10	M10-SFN-GA		M10-SFN-SS-A4	





### Hex Nut

Thread Size	Part No.	GA	Part No.	SS	Part No.	NyloK
M6	M6-HN-GA		M6-HN-SS-A4		M6-NN-SS-A4	
M8	M8-HN-GA		M8-HN-SS-A4		M8-NN-SS-A4	
M10	M10-HN-GA		M10-HN-SS-A4		M10-NN-SS-A4	
M12	M12-HN-GA		M12-HN-SS-A4		M12-NN-SS-A4	





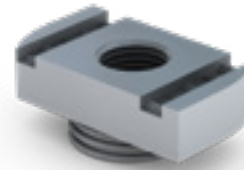
Channel Nut - Long Spring

Thread Size	Part No. 	Part No. 
M6	IC-NUT-M6-L-GA	IC-NUT-M6-L-SS
M8	IC-NUT-M8-L-GA	IC-NUT-M8-L-SS
M10	IC-NUT-M10-L-GA	IC-NUT-M10-L-SS
M12	IC-NUT-M12-L-GA	IC-NUT-M12-L-SS





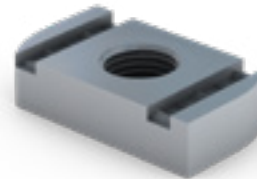
Channel Nut - Short Spring

Thread Size	Part No. 	Part No. 
M6	IC-NUT-M6-S-GA	IC-NUT-M6-S-SS
M8	IC-NUT-M8-S-GA	IC-NUT-M8-S-SS
M10	IC-NUT-M10-S-GA	IC-NUT-M10-S-SS
M12	IC-NUT-M12-S-GA	IC-NUT-M12-S-SS





Channel Nut - No Spring

Thread Size	Part No. 	Part No. 
M6	IC-NUT-M6-N-GA	IC-NUT-M6-N-SS
M8	IC-NUT-M8-N-GA	IC-NUT-M8-N-SS
M10	IC-NUT-M10-N-GA	IC-NUT-M10-N-SS
M12	IC-NUT-M12-N-GA	IC-NUT-M12-N-SS





Flat Washer

Size	Part No. 	Part No. 	Part No. Nylon
M6	M6-FW-GA	M6-FW-SS-A4	M6-FW-NY
M8	M8-FW-GA	M8-FW-SS-A4	M8-FW-NY
M10	M10-FW-GA	M10-FW-SS-A4	M10-FW-NY
M12	M12-FW-GA	M12-FW-SS-A4	M12-FW-NY





Internal Tooth Shake Proof Washer

Thread Size	Part No. 	Part No. 
M6	M6-SW-GA	M6-SW-SS-A4
M8	M8-SW-GA	M8-SW-SS-A4
M10	M10-SW-GA	M10-SW-SS-A4
M12	M12-SW-GA	M12-SW-SS-A4




### Single Coil Spring Washer

Thread Size	Part No. 	Part No. 
M6	M6-SPW-GA	M6-SPW-SS-A4
M8	M8-SPW-GA	M8-SPW-SS-A4
M10	M10-SPW-GA	M10-SPW-SS-A4
M12	M12-SPW-GA	M12-SPW-SS-A4



### Threaded Rod (Studding)

Size	Length (mm)	Part No. 	Part No. 
M6	1M	M6-R1-GA	M6-R1-SS-A4
	3M	M6-R3-GA	M6-R3-SS-A4
M8	1M	M8-R1-GA	M8-R1-SS-A4
	3M	M8-R3-GA	M8-R3-SS-A4
M10	1M	M10-R1-GA	M10-R1-SS-A4
	3M	M10-R3-GA	M10-R3-SS-A4
M12	1M	M12-R1-GA	M12-R1-SS-A4
	3M	M12-R3-GA	M12-R3-SS-A4



### Nylon Bush

Part Number	Thread Size	Length	Description
BUSH-6x6-NY	M6	6	BUSH 6MM ID X 8MM OD X 6MM LONG
BUSH-6x8-NY		8	BUSH 6MM ID X 8MM OD X 8MM LONG
BUSH-6x10-NY		10	BUSH 6MM ID X 8MM OD X 10MM LONG
BUSH-16x6-NY	M10	6	BUSH 10MM ID X 16MM OD X 6MM LONG
BUSH-16x7-NY		7	BUSH 10MM ID X 16MM OD X 7MM LONG
BUSH-16x8-NY		8	BUSH 10MM ID X 16MM OD X 8MM LONG
BUSH-16x10-NY		10	BUSH 10MM ID X 16MM OD X 10MM LONG
BUSH-16x12-NY		12	BUSH 10MM ID X 16MM OD X 12MM LONG
BUSH-16x15-NY	M12	15	BUSH 10MM ID X 16MM OD X 15MM LONG
BUSH-12x16-NY		16	Q-FIT BUSH 12MM ID X 16MM LONG



### Nylon Pad

Part Number	Length (mm)	Width (mm)	Thickness (mm)	Description
PAD-66.5x50x4-NY	66.5	50	4	PAD (ISOLATION)
PAD-50x40x4-NY	50	40	4	PAD (ISOLATION)
PAD-80x55x4-NY	80	55	4	PAD (ISOLATION)
PAD-75x50x4-NY	75	50	4	PAD (ISOLATION)



### Speedway Ladder Fixing Set

Finish and Material	Code	Contents		
		QTY	Fixing Code	Fixing Description
GA	389AA31-20-GA	1x	318AR32-GA	M10x20mm CUP SQ BOLT
		1x	M10-SFN-GA	M10 SERRATED FLANGE NUT
SS	389AA81-20-SS	1x	318AR82-SS	M10x20mm CUP SQ BOLT
		1x	M10-SFN-SS-A4	M10 SERRATED FLANGE NUT



### Speedway Ladder Fixing Kit

Finish and Material	Code	Contents		
		QTY	Fixing Code	Fixing Description
GA	VSFK-GA	8x	389AA31-20-GA	Speedway Ladder Fixing Set
SS	VSFK-SS	8x	389AA81-20-SS	Speedway Ladder Fixing Set



### Speedway Expansion Coupler Fixing

Finish and Material	Code	Contents		
		QTY	Fixing Code	Fixing Description
GA	VEFK-GA	8x	318AR33-GA	M10x25mm CUP SQ BOLT
		16x	M10-HN-GA	M10 HEX NUT
		8x	M12-FW-GA	M12 FLAT WASHER
SS	VEFK-SS	8x	318AR83-SS	M10x25mm CUP SQ BOLT
		16x	M10-HN-SS-A4	M10 HEX NUT
		8x	M12-FW-SS-A4	M12 FLAT WASHER



### Speedway Ladder Cover Fixing

Speedway covers are supplied complete with the required number of cover fixing kits (VCF3). The cover fixing kits are common to closed, louvered and peaked covers. The covers are secured to the ladder using pre-punched slots which are incorporated into the flanges of all Speedway ladder and fittings.



Finish and Material	Code	Contents		
		QTY	Fixing Code	Fixing Description
GA	VCF3-GA	1x	M6x12-BN-GA	M6x12mm Roofing Bolt & Nut
		1x	M6-SW-GA	M6 Internal Shake Proof Washer
SS	VCF3-SS	1x	M6X12-PHS-SS-A4	M6x12mm Pan Head Screw
		1x	M6-FW-SS-A4	M6 Flat Washer
		1x	M6-SW-SS-A4	M6 Internal Shake Proof Washer
	VCF8-SS	1x	M6-HN-SS-A4	M6 Hex Nut
		1x	M6X12-PHS-SS-A4	M6x12mm Pan Head Screw
		1x	M6-FW-SS-A4	M6 Flat Washer
		1x	M6-SW-SS-A4	M6 Internal Shake Proof Washer

### Earth Bonding Strap Fixing Set

Finish and Material	Code	Contents		
		QTY	Fixing Code	Fixing Description
GA	389AA55-GA	2x	318AR32-GA	M10x20mm CUP SQ BOLT
		2x	M10-SFN-GA	M10 SERRATED FLANGE NUT
SS	389AA65-SS	2x	318AR82-SS	M10x20mm CUP SQ BOLT
		2x	M10-SFN-SS-A4	M10 SERRATED FLANGE NUT







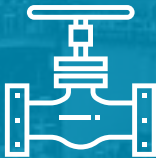

# VANTRUNK

# ENGINEERED FOR EXTREME ENVIRONMENTS

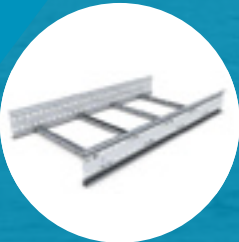
## SHAH DENIZ & SOUTH CAUCASUS PIPELINE EXPANSION

Shah Deniz Stage 2 Full Field Development is a giant project that will add a further 16 billion cubic metres per year (bcma) of gas production to the approximately 9 bcma produced by Shah Deniz Stage 1.

LOCATION	CLIENT
	
CASPIAN SEA Azerbaijan & Georgia.	<b>\$28bn</b> INVESTMENT 

FACT 1	FACT 2	FACT 3	FACT 4
 <b>\$28 billion</b> Investment for gas production & transportation	 Expansion of the existing Sangachal terminal and the addition of two new bridge linked offshore platforms	 Construction of the South Caucasus Pipeline expansion scheme	 European energy security will be increased by Caspian gas in European markets for first time

### PRODUCTS SUPPLIED



**SPEEDWAY**



**HEAVY DUTY CABLE TRAY**



Vantrunk stainless Speedway cable ladder systems, cable tray systems and Intelok secondary support system. Vantrunk have supplied all five phases of the BP Azeri developments from 2002 to 2017.